

[Subscribe](#)[Past Issues](#)[Translate ▼](#)

[View this email in your browser](#)



Dear colleagues,

In this Better Aid Update, we are pleased to share some of the CSF's recent and upcoming initiatives aimed at helping aid workers navigate the challenging operating environment in Sudan. This includes new research on [land grabbing and its impact on communities in al Butana](#), a blog on how the [Joint Operating Principles \(JOPs\) can contribute to the prevention of the weaponisation of humanitarian aid](#) and more. We are also delivering free online courses on the [Sudan context](#), [introduction to conflict sensitivity](#), and [conflict analysis](#) in the coming weeks.

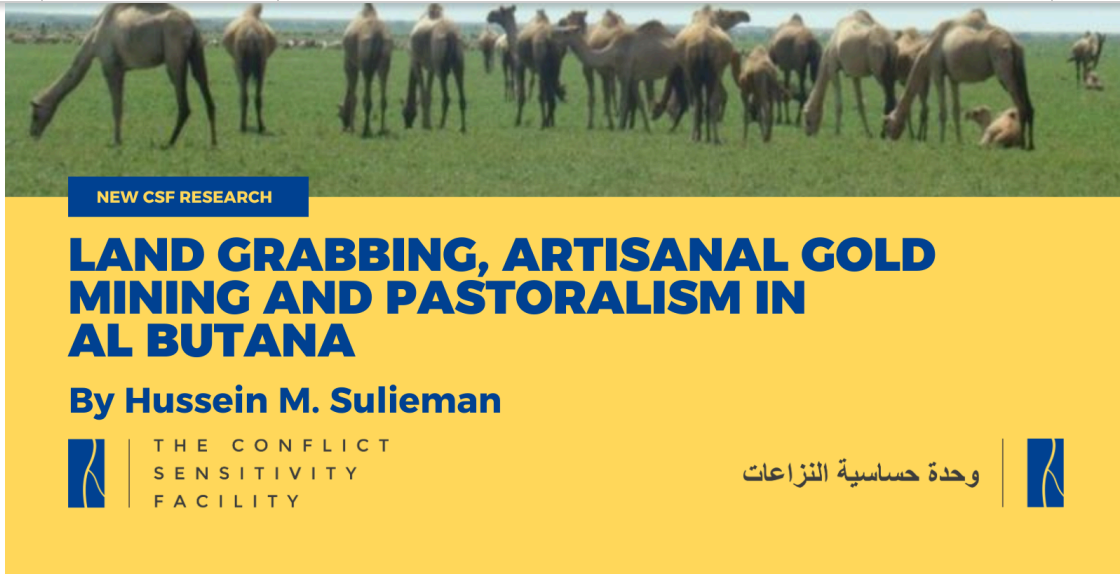
We hope you find this update useful and encourage you to share it with any colleagues who might benefit from the information included. Please do not hesitate to reach out to us at info@csf-sudan.org if you have any questions or you would like to get in touch.

Research

Subscribe

Past Issues

Translate ▼



What are the implications of land grabbing for local communities in Sudan? And how does this issue influence conflict-sensitive approaches to aid distribution?

Our latest research, 'Land grabbing, artisanal gold mining and pastoralism in al Butana', explores the complex dynamics of land ownership and usage in the context of Sudan's ongoing crisis. Read the full research [here](#).



What are the implications of the ongoing conflict for food systems in Sudan? How can food security programmes be designed to support conflict-resilient food systems while addressing the unique challenges each production system presents?

for supporting them in a conflict-sensitive manner. Read the full research [here](#).

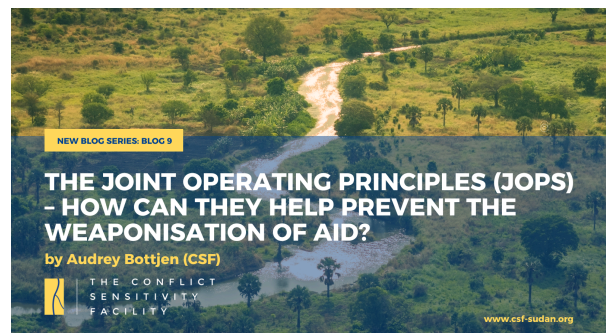
Blogs

The below blogs are part of the blog series '[Humanitarian access, local action and conflict sensitivity dilemmas in Sudan since April 2023](#)' which showcases different perspectives important for a more conflict sensitive aid response in Sudan.

Blog 9: The Joint Operating Principles (JOPs) – how can they help prevent the weaponisation of aid?

Audrey Bottjen, November 2024

Explore how the JOPs can safeguard humanitarian efforts from exploitation in the ongoing conflict, ensuring that aid reaches those in need without being manipulated by political agendas. Read the full blog [here](#).



Blog 8: Women's solidarity in Darfur: voices of strength and resilience

Mawa Mohamed, October 2024

Discover powerful narratives from women in Darfur that highlight their incredible strength and resilience amidst adversity, emphasising the vital role women can play in their

blog [here](#).

Capacity support

THE CONFLICT SENSITIVITY FACILITY | وحدة حساسية النزاعات

Are you new to the context and eager to learn more about Sudan and conflict sensitivity? Join us for our free online courses this November and deepen your understanding of these critical issues.

NOVEMBER	NOVEMBER	NOVEMBER
13	19	26 + 27
13.00 - 16.00	13.00 - 16.00	13.00 - 16.30
Introduction to conflict sensitivity	Conflict analysis	Sudan context

www.csf-sudan.org

In the coming weeks, we will continue offering free online training courses designed to enhance aid workers' understanding of conflict sensitivity and the broader context in Sudan. Upcoming trainings include:

- **Introduction to conflict sensitivity**,
November 13 at 13.00 - 16.00 Sudan time
Register [here](#) to learn more about the core concepts and principles of conflict sensitivity.
- **Conflict analysis**,
November 19 at 13.00 - 16.30 Sudan time
Register [here](#) to learn when, why and how to do a conflict analysis, as well as how to make aid more conflict sensitive.
- **Sudan context**,
November 26 and 27 at 13.00 - 16.00 Sudan time
Register [here](#) to learn about Sudan's history, economics and culture, as well as Sudan's long-term structural conflict and peace dynamics.

[Subscribe](#)[Past Issues](#)[Translate](#) ▼

In addition to our facilitated live courses, the [Knowledge Hub](#) features a growing number of short (1-2 hours) self-guided courses that allow those engaged in the aid response in Sudan to learn at their own pace. We have updated these courses recently to make sure they reflect changes in the context.

We recommend these courses as an integral part of any organisation's induction process, and a way for more senior staff to gain additional knowledge on a flexible schedule.

[Find our self guided courses here](#)

Don't forget to follow us on social media to stay up to date with the latest CSF analysis, courses and events.



The Conflict Sensitivity Facility (CSF) does not attempt to verify or substantiate any claims made within these publications. The opinions found therein are the responsibility of the authors themselves, and do not necessarily reflect those of the CSF.



Copyright (C) 2024 CSF. All rights reserved.

[Update Preferences](#) | [Unsubscribe](#)